

Differentials Based on Body Region

Diseases Primarily Limited to the Face

Dogs

Mucocutaneous pyoderma
 Nasal pyoderma
 Chin pyoderma
 Eosinophilic furunculosis of the face
 Pemphigus erythematosus
 Pemphigus foliaceus
 Discoid lupus erythematosus
 Uveodermatologic syndrome
 Juvenile cellulitis
 Nasal depigmentation
 (Early) Familial canine dermatomyositis

Cats

Pemphigus erythematosus
 Discoid lupus erythematosus
 Feline acne
 Mosquito bite hypersensitivity
 Idiopathic facial dermatitis of Persian cats
 Indolent ulcer
 Feline herpes or rhinotracheitis virus dermatitis
 Feline solar dermatosis



FIGURE 1-3 Facial Dermatitis.

Diseases of Nasal Depigmentation

Dogs

Contact dermatitis
 Pemphigus erythematosus
 Pemphigus foliaceus
 Pemphigus vulgaris
 Bullous pemphigoid
 Discoid lupus erythematosus
 Systemic lupus erythematosus
 Vesicular cutaneous lupus erythematosus
 Uveodermatologic syndrome
 Vitiligo
 Neoplasia (cutaneous lymphoma)



FIGURE 1-4 Nasal Depigmentation.

Diseases with Oral Lesions

Dogs

Candidiasis
 Pemphigus vulgaris
 Bullous pemphigoid
 Systemic lupus erythematosus
 Vesicular cutaneous lupus erythematosus
 Eosinophilic granuloma
 Cutaneous drug reaction
 Vasculitis
 Erythema multiforme or toxic epidermal necrolysis
 Contact dermatitis
 Epitheliotropic lymphoma
 Melanoma
 Squamous cell carcinoma

Cats

Indolent ulcers
 Eosinophilic granuloma
 Pemphigus vulgaris
 Bullous pemphigoid
 Systemic lupus erythematosus
 Cutaneous drug reaction
 Contact dermatitis
 Vasculitis
 Erythema multiforme or toxic epidermal necrolysis
 Squamous cell carcinoma
 Epitheliotropic lymphoma



FIGURE 1-5 Oral Lesions.



FIGURE 1-6 Ear Margin Dermatitis.

Ear Margin Dermatitis

Dogs

Canine leproid granuloma syndrome
 Scabies
 Fly bite dermatitis
 Ear margin dermatitis
 Vasculitis
 Pemphigus erythematosus
 Pemphigus foliaceus
 Pemphigus vulgaris
 Bullous pemphigoid
 Discoid lupus erythematosus
 Systemic lupus erythematosus
 Vesicular cutaneous lupus erythematosus
 Drug reactions
 Solar dermatitis
 Squamous cell carcinoma

Cats

Atopy
 Food allergy
 Mosquito bite hypersensitivity
 Eosinophilic plaque
 Feline scabies
 Vasculitis
 Pemphigus foliaceus
 Pemphigus vulgaris
 Bullous pemphigoid
 Systemic lupus erythematosus
 Drug reactions
 Solar dermatitis
 Squamous cell carcinoma

Nasodigital Hyperkeratosis

Dogs

Canine distemper
 Leishmaniasis
 Zinc-responsive dermatosis
 Hepatocutaneous syndrome
 Idiopathic nasodigital hyperkeratosis
 Hereditary nasal parakeratosis of Labrador retrievers
 Familial footpad hyperkeratosis
 Pemphigus foliaceus
 Systemic lupus erythematosus
 Cutaneous horn



FIGURE 1-7 Nasal Keratosis.

Interdigital Pododermatitis

Dogs

Bacterial infections
Malassezia
 Dermatophytosis
 Demodicosis
 Trombiculiasis
 Hookworm dermatitis
Pelodera dermatitis
 Atopy
 Food hypersensitivity
 Contact dermatitis
 Interdigital pyogranuloma
 Neoplastic tumor

Differentials Based on Body Region—cont'd

Cats

Bacterial infections
 Dermatophytosis
Malassezia
 Trombiculiasis
 Neoplastic tumor



FIGURE 1-8 Interdigital Pododermatitis.

Diseases of the Claw**Dogs**

Trauma
 Bacterial infections
 Dermatophytosis
 Leishmaniasis
 Vasculitis
 Symmetrical lupoid onychodystrophy
 Squamous cell carcinoma
 Melanoma

Cats

Trauma
 Bacterial infections
 Dermatophytosis
 Vasculitis
 Pemphigus foliaceus
 Squamous cell carcinoma



FIGURE 1-9 Diseases of the Claw.

Diseases of the Footpads**Dogs**

Contact dermatitis
 Canine distemper
 Leishmaniasis
 Pemphigus foliaceus
 Pemphigus vulgaris
 Bullous pemphigoid
 Systemic lupus erythematosus
 Vesicular cutaneous lupus erythematosus
 Vasculitis
 Hepatocutaneous syndrome
 Familial footpad hyperkeratosis
 Idiopathic nasodigital hyperkeratosis
 Zinc-responsive dermatosis
 Cutaneous horn

Cats

Plasma cell pododermatitis
 Mosquito bite hypersensitivity
 Contact dermatitis
 Pemphigus foliaceus
 Pemphigus vulgaris
 Bullous pemphigoid
 Systemic lupus erythematosus
 Vasculitis
 Hepatocutaneous syndrome

Cutaneous Horn

FIGURE 1-10 Diseases of the Footpads.

Differentials Based on Primary and Secondary Lesions

Vesicular and Pustular Diseases

(Uncommon but specific lesions associated with folliculitis or autoimmune skin diseases)

Dogs

Chin pyoderma
 Superficial pyoderma
 Impetigo
 Dermatophytosis
 Contact dermatitis
 Pemphigus foliaceus
 Pemphigus erythematosus
 Pemphigus vulgaris
 Bullous pemphigoid
 Systemic lupus erythematosus
 Vesicular cutaneous lupus erythematosus
 Cutaneous drug reaction
 Epidermolysis bullosa
 Canine familial dermatomyositis
 Subcorneal pustular dermatosis
 Sterile eosinophilic pustulosis

Cats

Superficial pyoderma
 Impetigo
 Dermatophytosis
 Contact dermatitis
 Pemphigus foliaceus
 Pemphigus erythematosus
 Pemphigus vulgaris
 Cutaneous drug reaction
 Epidermolysis bullosa

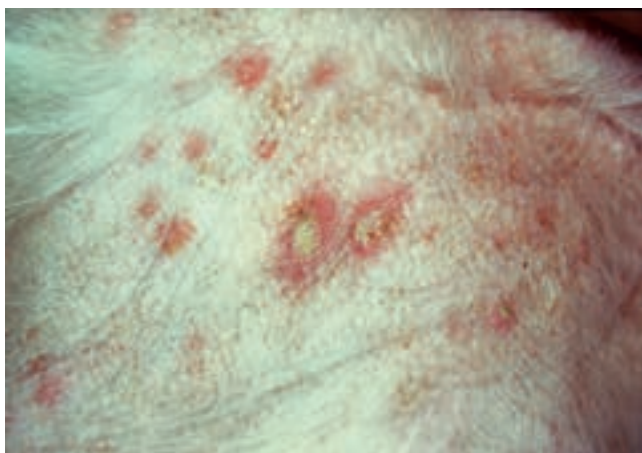


FIGURE 1-11 Vesicle Pustule.

Erosive and Ulcerative Diseases

(Uncommon and nonspecific lesions often subsequent to a vesicle or pustule usually caused by infection or autoimmune skin diseases)

Dogs

Mucocutaneous pyoderma
 Pyotraumatic dermatitis
 Deep pyoderma
 Candidiasis
 Protothecosis
 Blastomycosis
 Cryptococcosis
 Fly bite dermatitis
 Rocky Mountain spotted fever (RMSF)
 Cutaneous leishmaniasis
 Neosporosis
 Pemphigus vulgaris
 Bullous pemphigoid
 Systemic lupus erythematosus
 Vesicular cutaneous lupus erythematosus
 Vasculitis
 Erythema multiforme or toxic epidermal necrolysis
 Cutaneous drug reaction
 Epidermolysis bullosa
 Canine familial dermatomyositis
 Perianal fistulae
 Neoplasia

Cats

Pyotraumatic dermatitis
 Candidiasis
 Sporotrichosis
 Blastomycosis
 Feline calicivirus
 Feline rhinotracheitis virus
 Cutaneous leishmaniasis
 Neosporosis
 Pemphigus vulgaris
 Vasculitis
 Erythema multiforme or toxic epidermal necrolysis
 Cutaneous drug reaction
 Epidermolysis bullosa
 Eosinophilic plaque
 Indolent ulcer
 Plasma cell pododermatitis
 Idiopathic ulcerative dermatosis
 Feline solar dermatosis
 Neoplasia

Differentials Based on Primary and Secondary Lesions—cont'd

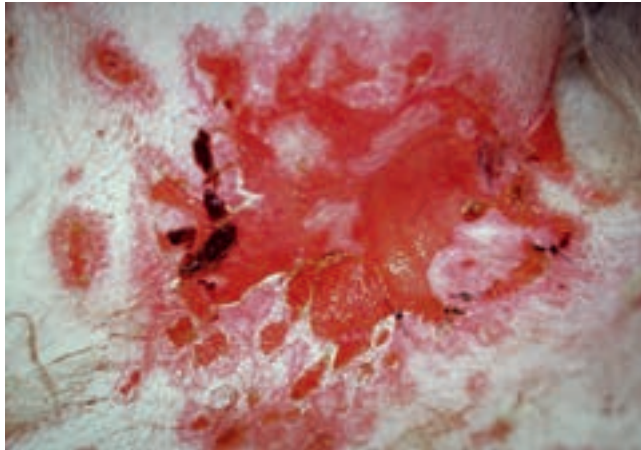


FIGURE 1-12 Ulcer Erosion.

Papules

(Nonspecific lesions caused by a cellular infiltrate)

Dogs

Chin pyoderma
 Superficial pyoderma
 Impetigo
 Dermatophytosis
 Canine scabies
 Cheyletiellosis
 Ear mites
 Trombiculiasis
 Pediculosis
 Atopy
 Flea allergy
 Food allergy
 Contact dermatitis
 Pemphigus foliaceus
 Pemphigus erythematosus
 Pemphigus vulgaris
 Bullous pemphigoid
 Systemic lupus erythematosus
 Vesicular cutaneous lupus erythematosus
 Cutaneous drug reaction
 Epidermolysis bullosa
 Canine familial dermatomyositis
 Subcorneal pustular dermatosis
 Sterile eosinophilic pustulosis
 Calcinosis cutis
 Squamous cell carcinoma
 Early neoplasia

Cats

Superficial pyoderma
 Dermatophytosis
 Demodicosis
 Canine scabies
 Cheyletiellosis
 Ear mites

Trombiculiasis
 Pediculosis
 Feline immunodeficiency virus (FIV) infection
 Atopy
 Food hypersensitivity
 Flea allergy dermatitis
 Contact dermatitis
 Cutaneous drug reaction
 Pemphigus foliaceus
 Pemphigus erythematosus
 Pemphigus vulgaris
 Cutaneous drug reaction
 Epidermolysis bullosa
 Squamous cell carcinoma
 Early neoplasia

Miliary Dermatitis**Cats**

Superficial pyoderma
 Dermatophytosis
 Demodicosis
 Cheyletiellosis
 Ear mites
 Atopy
 Food hypersensitivity
 Flea allergy dermatitis
 Pemphigus foliaceus
 Lupus
 Cutaneous drug reaction
 FIV infection



FIGURE 1-13 Miliary Dermatitis.

Plaques

(Larger lesions that usually are formed by numerous papules that coalesce)

Dogs

Dermatophytosis
 Contact dermatitis
 Cutaneous drug reaction

Calcinosis cutis
Squamous cell carcinoma
Early neoplasia

Cats

Dermatophytosis
Demodicosis
Cheyletiellosis
Ear mites
Trombiculiasis
FIV infection
Contact dermatitis
Cutaneous drug reaction
Squamous cell carcinoma

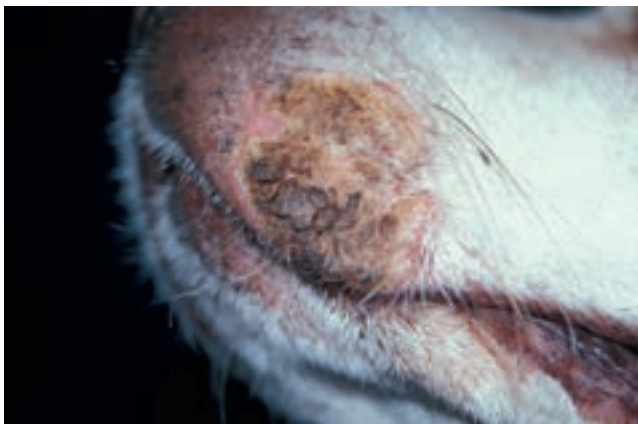


FIGURE 1-14 Plaque.

Follicular Casts

(Specific lesions often associated with primary keratinization defects)

Dogs

Primary seborrhea
Vitamin A-responsive dermatosis
Sebaceous adenitis



FIGURE 1-15 Excoriation.



FIGURE 1-16 Follicular Cast.

Epidermal Collarettes

(Specific lesions that develop subsequent to a pustule or vesicle; most often found in association with folliculitis)

Dogs

Superficial pyoderma
Impetigo
Demodicosis
Dermatophytosis
Pemphigus foliaceus



FIGURE 1-17 Epidermal Collarette.

Comedones

(Specific lesions that are caused by plugging of the hair follicles)

Dogs

Chin pyoderma
Demodicosis
Dermatophytosis
Canine hyperadrenocorticism
Schnauzer comedone syndrome
Vitamin A-responsive dermatosis
Hairless breeds
Color dilution alopecia
Follicular dysplasias

Differentials Based on Primary and Secondary Lesions—cont'd

Cats

Feline acne



FIGURE 1-18 Comedone.

Lichenification

(Characteristic lesion of yeast dermatitis in dogs but can also be caused by chronic inflammatory disease)

Dogs

Malasseziasis
Chronic inflammation
Parasitic infections
Hypersensitivities
Keratinization diseases



FIGURE 1-19 Lichenification.

Inflammatory or Pruritic Alopecic Diseases

(Nonspecific lesions caused by any inflammatory dermatitis)

Dogs

Superficial pyoderma
Mucocutaneous pyoderma
Pyotraumatic dermatitis
Malasseziasis
Canine scabies
Cheyletiellosis
Ear mites
Trombiculiasis
Pediculosis
Hookworm dermatitis
Pelodera dermatitis
Atopy
Food hypersensitivity
Flea allergy dermatitis
Contact dermatitis
Pemphigus foliaceus
Acral lick dermatitis
Subcorneal pustular dermatosis
Sterile eosinophilic pustulosis
Hepatocutaneous syndrome

Cats

Superficial pyoderma
Pyotraumatic dermatitis
Malasseziasis
Feline scabies
Cheyletiellosis
Ear mites
Trombiculiasis
Pediculosis
Atopy
Food hypersensitivity
Flea allergy dermatitis
Contact dermatitis
Idiopathic facial dermatitis of Persian cats
Psychogenic alopecia
Feline lymphocytic mural folliculitis
Eosinophilic plaque
Idiopathic ulcerative dermatosis
Feline paraneoplastic alopecia
Hepatocutaneous syndrome

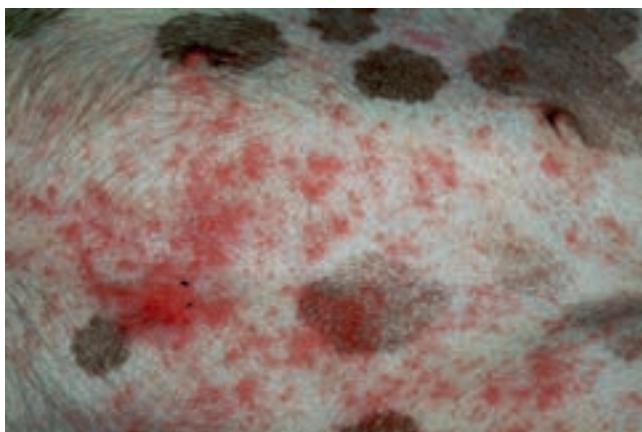


FIGURE 1-20 Inflammatory Alopecia.



FIGURE 1-21 Noninflammatory Alopecia.

Noninflammatory or Nonpruritic Alopecic Diseases

(Relatively specific lesions associated with endocrine disease or follicular dysplasia)

Dogs

- Hyperadrenocorticism
- Hypothyroidism
- Sex hormone imbalance
- Alopecia X
- Recurrent flank alopecia
- Congenital hypotrichosis
- Color dilution alopecia
- Black hair follicular dysplasia
- Canine pattern baldness
- Idiopathic bald thigh syndrome of greyhounds
- Anagen and telogen defluxion
- Postclipping alopecia
- Traction alopecia
- Injection reaction
- Alopecia areata

Cats

- Allergic alopecia
- Hyperadrenocorticism
- Congenital hypotrichosis
- Feline preauricular and pinnal alopecia
- Anagen and telogen defluxion
- Injection reaction
- Alopecia areata
- Feline lymphocytic mural folliculitis

Cellulitis and Draining Lesions

(Nonspecific lesions caused by severe cellular infiltrates; usually associated with infection or neoplasia)

Dogs

- Deep pyoderma
- Actinomycosis
- Nocardiosis
- Opportunistic mycobacteriosis
- Tuberculosis
- Pythiosis
- Lagenidiosis
- Zygomycosis
- Blastomycosis
- Coccidiomycosis
- Juvenile cellulitis
- Blepharitis
- Perianal fistulae

Cats

- Subcutaneous abscess
- Actinomycosis
- L-form infection
- Nocardiosis
- Opportunistic mycobacteriosis
- Tuberculosis
- Plague
- Phaeohiphomycosis
- Pythiosis
- Lagenidiosis
- Sporotrichosis
- Zygomycosis
- Blastomycosis
- Coccidiomycosis
- Blepharitis
- Anal sac disease

Differentials Based on Primary and Secondary Lesions—cont'd



FIGURE 1-22 Cellulitis.

Nodular Diseases

(Nonspecific lesions caused by any cellular infiltrate; most often associated with neoplasia or infection)

Dogs

Botryomycosis
Actinomycosis
Nocardiosis
Opportunistic mycobacteriosis
Subcutaneous abscess
Tuberculosis
Canine leproid granuloma syndrome
Dermatophytosis
Eumycotic mycetoma
Phaeohyphomycosis
Protothecosis
Pythiosis
Lagenidiosis
Sporotrichosis
Zygomycosis
Blastomycosis
Coccidiomycosis
Histoplasmosis
Cuterebra
Dracunculiasis
Viral papillomatosis
Leishmaniasis
Cutaneous neosporosis
Systemic lupus erythematosus
Vesicular cutaneous lupus erythematosus
Cutaneous vesicular lupus erythematosus
Sterile nodular panniculitis
Idiopathic sterile granuloma and pyogranuloma
Tail gland hyperplasia
Acral lick dermatitis
Callus
Hygroma
Eosinophilic granuloma

Canine solar dermatosis
Neoplastic tumors
Nodular dermatofibrosis
Fibropruritic nodule
Collagenous nevus
Follicular cyst–intraepidermal inclusion cyst
Calcinosis circumscripta

Cats

Botryomycosis
Actinomycosis
Nocardiosis
Opportunistic mycobacteriosis
Subcutaneous abscess
Feline leprosy
Plague
Tuberculosis
Dermatophytosis
Eumycotic mycetoma
Phaeohyphomycosis
Protothecosis
Pythiosis
Lagenidiosis
Sporotrichosis
Zygomycosis
Blastomycosis
Coccidiomycosis
Cryptococcosis
Histoplasmosis
Cuterebra
Dracunculiasis
Feline cowpox
Viral papillomatosis
Leishmaniasis
Cutaneous neosporosis
Sterile nodular panniculitis
Eosinophilic granuloma
Neoplastic tumors
Follicular cyst–intraepidermal inclusion cyst

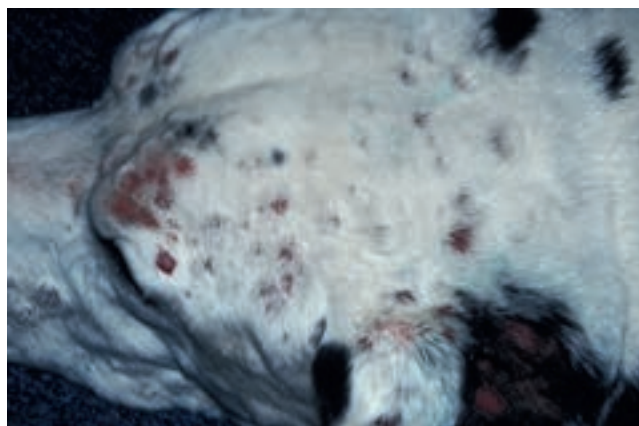


FIGURE 1-23 Nodules.

Pruritic Diseases

(Nonspecific symptoms caused by any inflammatory dermatitis; some diseases have characteristic patterns that are more clinically relevant)

Dogs

Superficial pyoderma
 Malasseziasis
 Canine scabies
 Cheyletiellosis
 Ear mites
 Trombiculiasis
 Pediculosis
 Hookworm dermatitis
Pelodera dermatitis
 Atopy
 Food hypersensitivity
 Flea allergy dermatitis
 Contact dermatitis
 Pemphigus foliaceus
 Acral lick dermatitis
 Subcorneal pustular dermatosis
 Sterile eosinophilic pustulosis
 Hepatocutaneous syndrome
 Cutaneous lymphoma

Cats

Superficial pyoderma
 Malasseziasis
 Feline scabies
 Cheyletiellosis
 Ear mites
 Trombiculiasis
 Pediculosis
 Atopy
 Food hypersensitivity
 Flea allergy dermatitis
 Contact dermatitis
 Idiopathic facial dermatitis of Persian cats
 Psychogenic alopecia
 Feline lymphocytic mural folliculitis
 Eosinophilic plaque
 Idiopathic ulcerative dermatosis
 Feline paraneoplastic alopecia
 Hepatocutaneous syndrome



FIGURE 1-24 Pruritus.

Seborrheic Diseases

(Nonspecific lesions that usually are secondary to a primary dermatologic disease but can be caused by a primary keratinization defect)

Dogs

Superficial pyoderma
 Malasseziasis
 Dermatophytosis
 Demodicosis
 Canine scabies
 Cheyletiellosis
 Pediculosis
 Leishmaniasis
 Food hypersensitivity
 Pemphigus foliaceus
 Pemphigus erythematosus
 Systemic lupus erythematosus
 Cutaneous drug reaction
 Hyperadrenocorticism
 Hypothyroidism
 Sex hormone imbalances
 Canine primary seborrhea
 Vitamin A-responsive dermatosis
 Ichthyosis
 Epidermal dysplasia of West Highland white terriers
 Sebaceous adenitis
 Tail gland hyperplasia
 Zinc-responsive dermatosis
 Hepatocutaneous syndrome
 Canine ear margin seborrhea
 Neoplasia

Differentials Based on Primary and Secondary Lesions—cont'd

Cats

Superficial pyoderma
 Dermatophytosis
 Malasseziasis
 Demodicosis
 Feline scabies
 Cheyletiellosis
 Cat fur mite
 Pediculosis
 Pemphigus foliaceus
 Pemphigus erythematousus
 Systemic lupus erythematosus
 Cutaneous drug reaction
 Hepatocutaneous syndrome
 Tail gland hyperplasia
 Idiopathic facial dermatitis of Persian cats
 Neoplasia



FIGURE 1-25 Seborrhea.



FIGURE 1-26 Crust.

Hyperpigmentation

(Common, usually nonspecific, change caused by inflammation of long duration)

Dogs

Lentigo
 Chronic trauma
 Chronic inflammation
 Allergy
 Post-infection
 Cushing's
 Sex hormone alopecia
 Alopecia X
 Recurrent flank alopecia
 Melanoma



FIGURE 1-27 Hyperpigmentation.

Hypopigmentation

(Uncommon lesion)
 Autoimmune skin disease
 Vitiligo
 Uveodermatologic syndrome



FIGURE 1-28 Hypopigmentation.